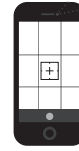


VESICULAR FLUID

1. OPEN CAMERA APP
2. FOCUS ON QR CODE
3. TAP BANNER TO WATCH VIDEO



CONSIDERATIONS:

- COLLECT AS MUCH FLUID AS POSSIBLE.
 - VESICLES ARE TYPICALLY LOCATED ON THE SNOUT, POSSIBLY AROUND THE CORONARY BAND OF THE FOOT.
 - CONSULT WITH YOUR VETERINARIAN FOR CORRECT NEEDLE AND SYRINGE SIZE.
 - BE CAREFUL NOT TO BURST INTACT VESICLES WHEN RESTRAINING PIG.
-
- FOR SAFETY, BE AWARE OF PEN SURROUNDINGS FOR HAZARDS AND CURIOUS ANIMALS WHEN COLLECTING SAMPLES.
 - USE PERSONAL PROTECTIVE EQUIPMENT.
 - USE CLEAN SUPPLIES TO AVOID SAMPLE CONTAMINATION.
 - LABEL SAMPLES WITH PERMANENT MARKER.

SUPPLIES:

- 18 GAUGE NEEDLE
- SYRINGE
- SNAP CAP TUBE OR RED TOP BLOOD TUBE

ANIMAL RESTRAINT: (PERSON 1)

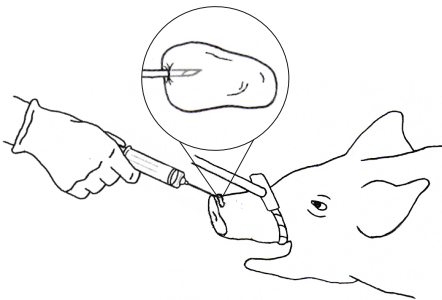
DEPENDING ON SIZE OF ANIMAL, REFER TO PIGLET RESTRAINT INSTRUCTIONS OR FINISHER OR ADULT RESTRAINT INSTRUCTIONS ON RESTRAINT PAGE.

COLLECTION INSTRUCTIONS:

(PERSON 2)

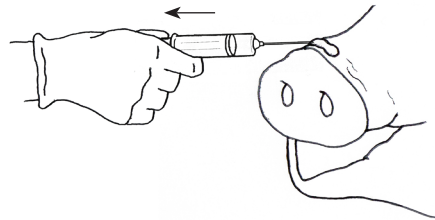
STEP 1.

CAREFULLY STICK NEEDLE INTO THE VESICLE.



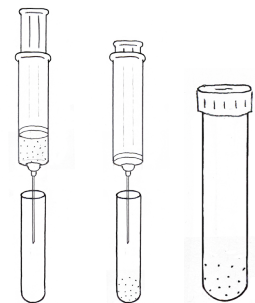
STEP 2.

PULL SYRINGE BACK TO COLLECT FLUID.



STEP 3.

PUT FLUID INTO TUBE. PROMPTLY CHILL SAMPLES FOR SHIPMENT.



SUBMISSION INSTRUCTIONS:

REFER TO SAMPLE SUBMISSION INSTRUCTIONS ON SAMPLE SUBMISSION PAGE

COLLABORATORS:

These materials were developed through a collaborative process between Swine Medicine Education Center, Center for Food Security and Public Health, American Association of Swine Veterinarians, National Pork Board, Multistate Partnership for Security in Agriculture and United States Department of Agriculture.

FUNDING:

This project is funded by USDA's Animal and Plant Health Inspection Service through the National Animal Disease Preparedness and Response Program

ILLUSTRATIONS:

Mary Breuer
Swine Medicine Education Center
Iowa State University