

# TONSIL

1. OPEN CAMERA APP
2. FOCUS ON QR CODE
3. TAP BANNER TO WATCH VIDEO



## CONSIDERATIONS:

- EUTHANIZE PIGS ACCORDING TO FARM PROTOCOL.
- DO NOT FIX OR FREEZE THIS SAMPLE.
- USE PERSONAL PROTECTIVE EQUIPMENT.
- USE CLEAN SUPPLIES TO AVOID SAMPLE CONTAMINATION.
- LABEL SAMPLES WITH PERMANENT MARKER.

## SUPPLIES:

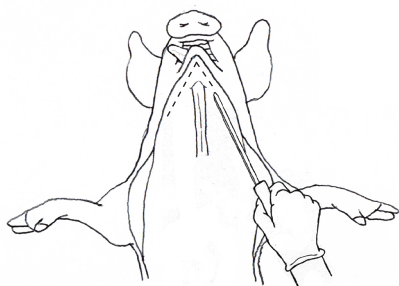
- KNIFE
- SEALABLE PLASTIC BAG OR CONTAINER

## COLLECTION INSTRUCTIONS:

(REFER TO NECROPSY HANDOUT FOR OPENING THE PIG)

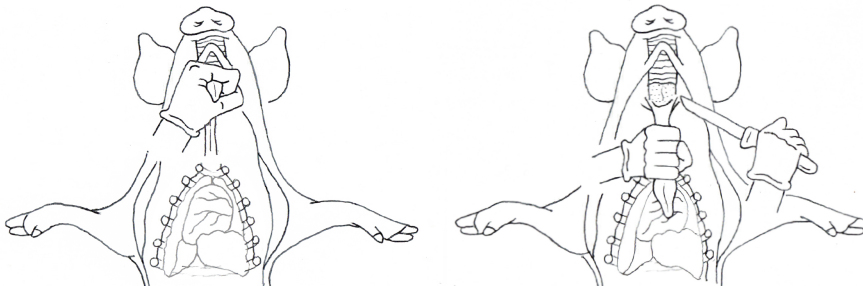
### STEP 1.

CUT ALONG RIGHT AND LEFT SIDE OF JAW TO FREE THE TONGUE.



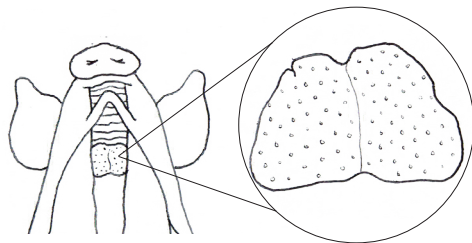
### STEP 2.

PULL THE TONGUE OUT THROUGH THE CUT. WHILE PULLING TONGUE BACK TOWARDS THE HEART, CONTINUE CUTTING TO EXPOSE THE PALATE AND TONSIL.



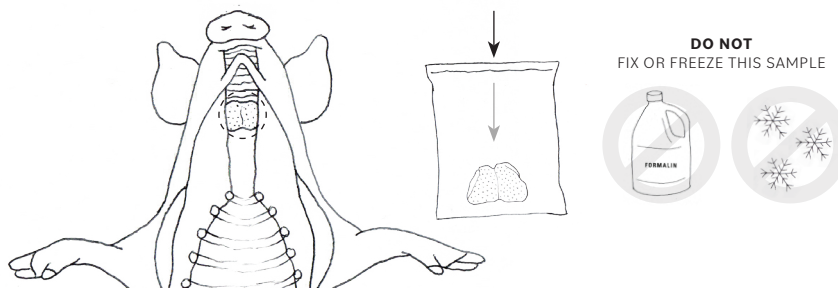
### STEP 3.

TONSIL WILL NOW BE FULLY VISIBLE. LOCATED AT THE BACK OF THE THROAT, IT HAS A DIMPLED APPEARANCE, SIMILAR TO A STRAWBERRY.



### STEP 4.

CUT AROUND AND BELOW TO REMOVE TONSIL. PLACE SAMPLE IN BAG. PROMPTLY CHILL SAMPLES FOR SHIPMENT.



## SUBMISSION INSTRUCTIONS:

REFER TO SAMPLE SUBMISSION INSTRUCTIONS ON SAMPLE SUBMISSION PAGE

#### COLLABORATORS:

These materials were developed through a collaborative process between Swine Medicine Education Center, Center for Food Security and Public Health, American Association of Swine Veterinarians, National Pork Board, Multistate Partnership for Security in Agriculture and United States Department of Agriculture.

#### FUNDING:

This project is funded by USDA's Animal and Plant Health Inspection Service through the National Animal Disease Preparedness and Response Program

#### ILLUSTRATIONS:

Mary Breuer  
Swine Medicine Education Center  
Iowa State University