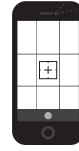


SPLEEN SWAB

1. OPEN CAMERA APP
2. FOCUS ON QR CODE
3. TAP BANNER TO WATCH VIDEO



CONSIDERATIONS:

- CONSULT WITH YOUR VETERINARIAN TO DETERMINE THE CORRECT TYPE OF SWAB AND TRANSPORT MEDIA PER DIAGNOSTIC REQUEST.
- EUTHANIZE PIGS ACCORDING TO FARM PROTOCOL.
- SPLEEN CAN BE COLLECTED VIA TIER 2 NECROPSY SAMPLE COLLECTION OR TIER 2 SPLEEN SAMPLE COLLECTION.
- FREEZING THE SAMPLE IS NOT PREFERRED. CONSULT WITH YOUR VETERINARIAN PRIOR TO FREEZING SAMPLES.
- REFER TO THE POOLING RESOURCES IF ASKED TO POOL SAMPLES.
- USE PERSONAL PROTECTIVE EQUIPMENT.
- USE CLEAN SUPPLIES TO AVOID SAMPLE CONTAMINATION.
- LABEL SAMPLES APPROPRIATELY.

SUPPLIES:

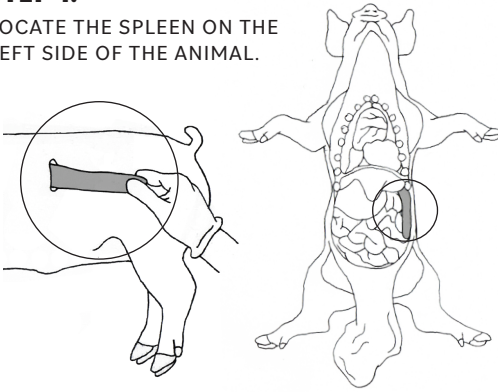
- KNIFE
- STERILE SWAB
- SNAP CAP TUBE (WITH APPROPRIATE TRANSPORT MEDIA)

COLLECTION INSTRUCTIONS:

(REFER TO TIER 2 SAMPLING SPLEEN OR NECROPSY RESOURCES)

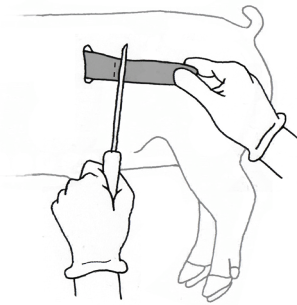
STEP 1.

LOCATE THE SPLEEN ON THE LEFT SIDE OF THE ANIMAL.



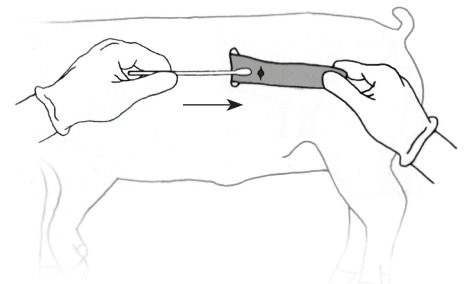
STEP 2.

CUT HALFWAY THROUGH THE SPLEEN.



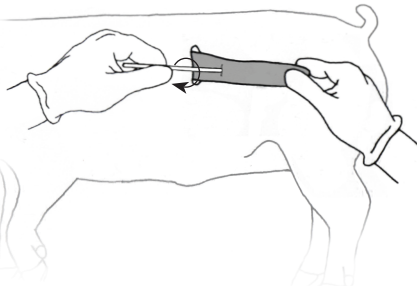
STEP 3.

INSERT STERILE SWAB INTO THE CUT OF THE SPLEEN.



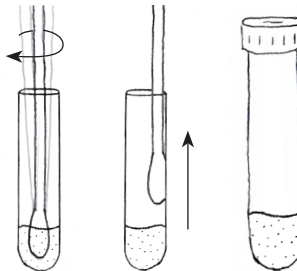
STEP 4.

ROTATE SWAB FOR 5 SECONDS INSIDE THE SPLEEN. REMOVE SWAB.



STEP 5.

PUT SWAB INTO SNAP CAP TUBE. VIGOROUSLY SWIRL. REMOVE THE SWAB WHILE PRESSING IT ALONG THE SIDE. PROMPTLY CHILL SAMPLES FOR SHIPMENT.



SUBMISSION INSTRUCTIONS:

REFER TO SAMPLE SUBMISSION INSTRUCTIONS ON SAMPLE SUBMISSION PAGE

COLLABORATORS:

These materials were developed through a collaborative process between Swine Medicine Education Center, Center for Food Security and Public Health, American Association of Swine Veterinarians, National Pork Board, Multistate Partnership for Security in Agriculture and United States Department of Agriculture.

FUNDING:

This resource was developed with funding by the National Pork Board.

ILLUSTRATIONS:

Mary Breuer
Swine Medicine Education Center
Iowa State University