

## Site Map Examples for Animals with Outdoor Access

The many examples below represent several different types of production in which animals have access to the outdoors. It is not meant to be all-inclusive, but instead demonstrate some different ways that the biosecurity lines might be drawn on a site. Each example includes an explanation of how the site is being modified to enhance the biosecurity on the site. Applying biosecurity measures to production sites in which animals have outdoor access can be more difficult, especially in areas with feral swine. State animal health officials have the final say if the biosecurity measures have been adequately implemented on the production site.

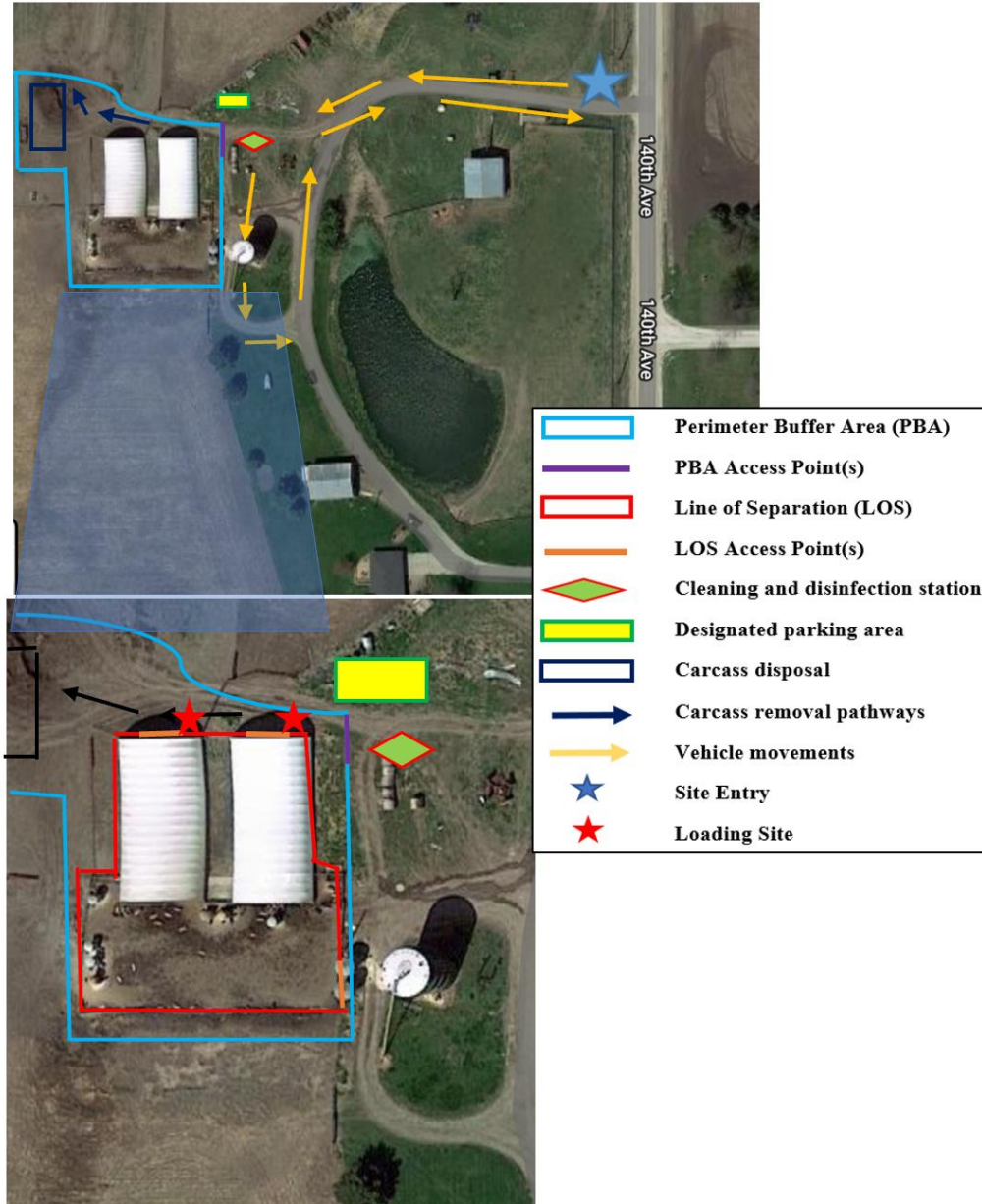
### Example One: Outdoor Lots



Modifications to the site to increase the level of biosecurity:

- Site entry is established away from house, residential driveway, and other residential areas.
- Perimeter Buffer Area defines animal area only and does not include residential areas and driveway used for other equipment to limit entry.
- Cleaning and disinfection stations are easily accessible to vehicles/equipment before crossing PBA access point. It is located next to a building with electricity for the power washer.
- On-site compost area is used for carcass disposal and has a designated PBA access point. There is no cross traffic with outside vehicles/equipment.










## Example Two: Hoop Barns



Modifications to the site to increase the level of biosecurity:

- Move feeders closer to fence line and utilize wagon (instead of mixer) to fill feeders across the fence instead of driving into the pen.
- Move hay/corn stalk bales inside the PBA so they would have reduced exposure to outside traffic
- Create compost area inside PBA so the transport of carcasses does not require movement crossing over the PBA, especially when multiple carcasses need to be disposed of.
- Utilize gates at load-out to keep trailer outside of the PBA.

### Example Three: Animals on Pasture

	Line of Separation (LOS)
	LOS Access Point(s)
	Cleaning and disinfection station
	Designated parking area
	Carcass disposal
	Carcass removal pathways
	Vehicle movements
	Site Entry
	Loading Site



Modifications to the site to increase the level of biosecurity:

- Utilize gates at load-out to keep trailer outside of the LOS.
- Equipment for field work and hay bales can move around the outside of the LOS.
- Feeders are moved closer to fence line so minimal equipment crosses the LOS.
- Compost area has designated LOS access points for carcass disposal.

\*Perimeter Buffer Area (PBA) could not be established around pasture.

### Example Four: Hoop Buildings with Pastures

	Line of Separation (LOS)
	LOS Access Point(s)
	Cleaning and disinfection station
	Designated parking area
	Carcass disposal
	Carcass removal pathways
	Vehicle movements
	Site Entry
	Loading Site



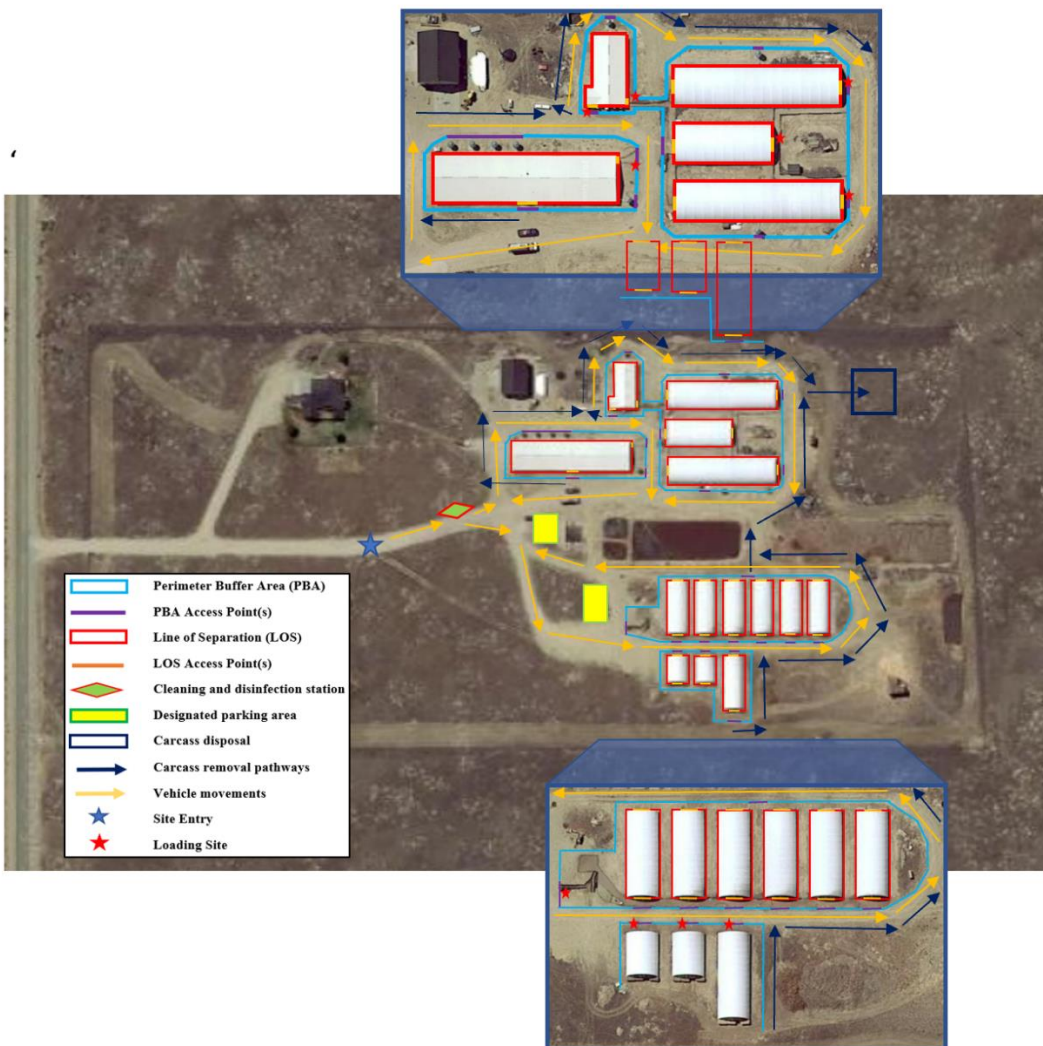
Modifications to the site to increase the level of biosecurity:

- Site entry uses existing fence line to secure the site.
- Maximized the distance from owner's cattle in neighboring pasture on the right.
- Move feeders close to the LOS on the south side to minimize vehicle equipment entry inside the LOS (fill feeders over the fence when possible).
- Utilize gates at load-out to keep trailer outside of the LOS.

\*Perimeter Buffer Area could not be established around the fence line, but shelterbelt and trees establish a buffer area on north and west boundaries.

\*The small creek to the right of the buildings limits the locations for a compost pile. Currently the site uses rendering, but a small compost pile could be established on site during an outbreak if needed.

### Example Five: Hoop Barns and Indoor Buildings



Modifications to the site to increase the level of biosecurity:

- PBA and pig areas are separated from residential areas and shop.
- PBA does not include driveways/roads around the barns to minimize crossing the PBA from nonfarm vehicles and equipment, especially those that need to access the feed bins.
- PBA includes existing holding pens to be used as a load out area and for pigs to be easily moved between buildings.
- Compost area located onsite.
- Two parking lots for added convenience for travelling to barns.

**Additional comments:**

The extent of the biosecurity lines will vary by site, depending on vehicle traffic patterns and site layout.

When determining the location of the C&D station, several factors need to be considered including the following:

- Source of water and electricity
- Drainage in the area
- Possible disease spread if the splatter is too close to animal areas
- Proximity of PBA and LOS (washing vehicles too far away from the LOS or PBA might risk re-contamination of the equipment/vehicle depending on cross traffic patterns).