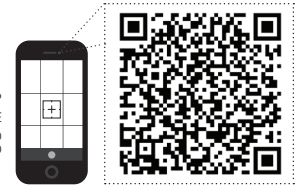


PROCESSING FLUIDS

1. OPEN CAMERA APP
2. FOCUS ON QR CODE
3. TAP BANNER TO WATCH VIDEO



CONSIDERATIONS:

- FOR BEST HERD SENSITIVITY, COLLECT PROCESSING FLUIDS FROM AS MANY LITTERS AND ROOMS AS POSSIBLE.
- A REPRESENTATIVE SAMPLE SIZE WOULD INCLUDE A MINIMUM OF 30 LITTERS.
- DO NOT FREEZE THIS SAMPLE.
- FOR SAFETY, BE AWARE OF PEN SURROUNDINGS FOR HAZARDS AND CURIOUS ANIMALS WHEN COLLECTING SAMPLES.
- USE PERSONAL PROTECTIVE EQUIPMENT.
- USE CLEAN SUPPLIES TO AVOID SAMPLE CONTAMINATION.
- LABEL SAMPLES WITH PERMANENT MARKER.

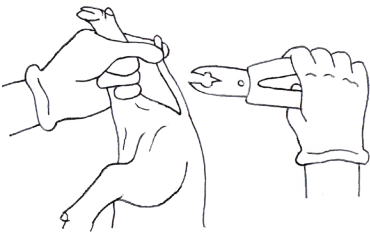
SUPPLIES:

- 2 CLEAN PLASTIC BAGS
- CONTAINER
- UNBLEACHED CHEEESE CLOTH OR STERILE GAUZE
- CONICAL TUBE
- RUBBER BAND

COLLECTION INSTRUCTIONS:

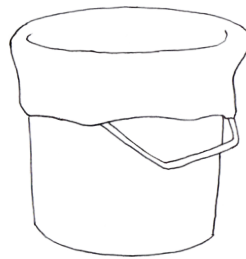
STEP 1.

WHILE PROCESSING PIGLETS, PLACE TAILS AND TESTICLES IN A CLEAN PLASTIC BAG.



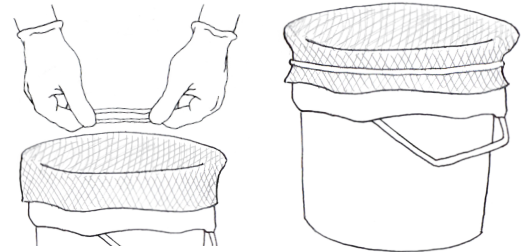
STEP 2.

LINE A CONTAINER WITH A CLEAN PLASTIC BAG.



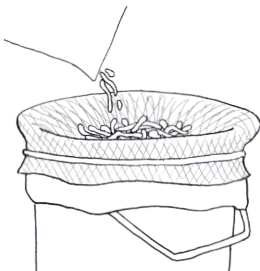
STEP 3.

PLACE CHEESE CLOTH OVER OPENING OF CONTAINER. SECURE CHEESE CLOTH AND PLASTIC BAG WITH RUBBER BAND.



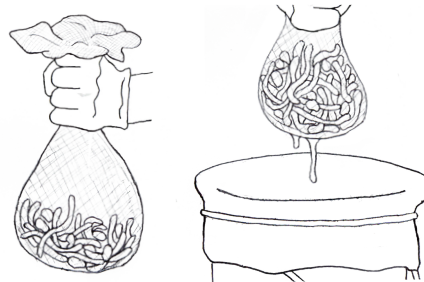
STEP 4.

POUR TISSUES ONTO CHEESE CLOTH. ALLOW FLUIDS TO DRAIN INTO THE CONTAINER.



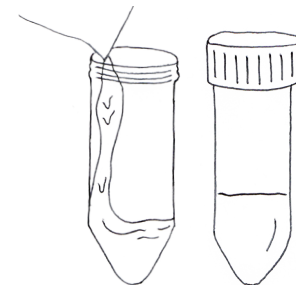
STEP 5.

GATHER EACH END OF CHEESE CLOTH SO TISSUES SIT IN THE CENTER, APPLY GENTLE PRESSURE.



STEP 6.

TRANSFER FLUIDS FROM BAG TO CONICAL TUBE. PROMPTLY CHILL SAMPLES FOR SHIPMENT.



DO NOT
FREEZE THIS
SAMPLE



SUBMISSION INSTRUCTIONS:

REFER TO SAMPLE SUBMISSION INSTRUCTIONS ON SAMPLE SUBMISSION PAGE

COLLABORATORS:

These materials were developed through a collaborative process between Swine Medicine Education Center, Center for Food Security and Public Health, American Association of Swine Veterinarians, National Pork Board, Multistate Partnership for Security in Agriculture and United States Department of Agriculture.

FUNDING:

This project is funded by USDA's Animal and Plant Health Inspection Service through the National Animal Disease Preparedness and Response Program

ILLUSTRATIONS:

Mary Breuer
Swine Medicine Education Center
Iowa State University