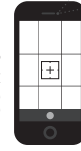


ORAL SWABS

1. OPEN CAMERA APP
2. FOCUS ON QR CODE
3. TAP BANNER TO WATCH VIDEO



CONSIDERATIONS:

- CONSULT WITH YOUR VETERINARIAN TO DETERMINE THE CORRECT TYPE OF SWAB AND TRANSPORT MEDIA FOR YOUR DESIRED DIAGNOSTICS.
- SUBMIT INDIVIDUAL SAMPLES UNLESS INSTRUCTED OTHERWISE.
- FREEZING THE SAMPLE IS NOT PREFERRED. CONSULT WITH YOUR VETERINARIAN PRIOR TO FREEZING SAMPLES.
- REFER TO THE POOLING RESOURCES IF ASKED TO POOL SAMPLES.
- FOR SAFETY, BE AWARE OF PEN SURROUNDINGS FOR HAZARDS AND CURIOUS ANIMALS WHEN COLLECTING SAMPLES.
- USE PERSONAL PROTECTIVE EQUIPMENT.
- USE CLEAN SUPPLIES TO AVOID SAMPLE CONTAMINATION.
- LABEL SAMPLES WITH PERMANENT MARKER.

SUPPLIES:

- STERILE SWAB
- SNAP CAP TUBE (WITH APPROPRIATE TRANSPORT MEDIA)

ANIMAL RESTRAINT: (PERSON 1)

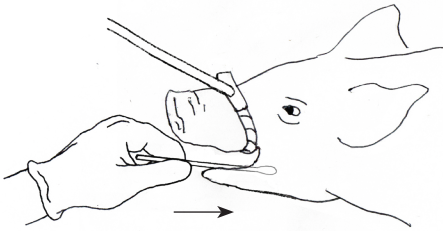
DEPENDING ON SIZE OF ANIMAL, REFER TO PIGLET RESTRAINT INSTRUCTIONS OR FINISHER OR ADULT RESTRAINT INSTRUCTIONS ON RESTRAINT PAGE

COLLECTION INSTRUCTIONS:

(PERSON 2)

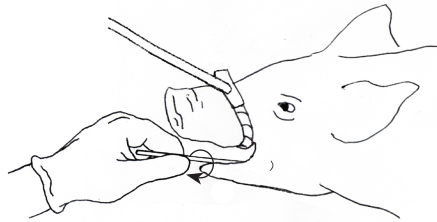
STEP 1.

INSERT STERILE SWAB BETWEEN TEETH AND CHEEK OF LOWER JAW.



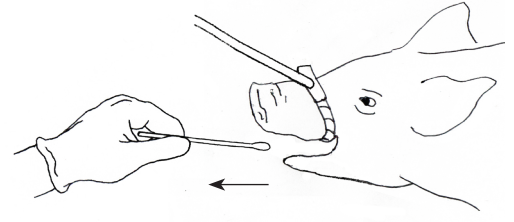
STEP 2.

ROTATE THE SWAB FOR 5 SECONDS UNTIL THE SWAB IS SOAKED IN ORAL FLUID.



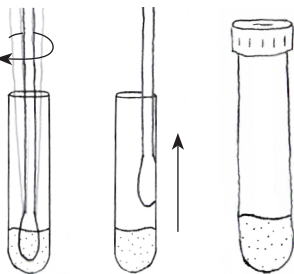
STEP 3.

REMOVE SWAB.



STEP 4.

PUT SWAB INTO SNAP CAP TUBE. VIGOROUSLY SWIRL. REMOVE THE SWAB WHILE PRESSING IT ALONG THE SIDE. PROMPTLY CHILL SAMPLES FOR SHIPMENT.



SUBMISSION INSTRUCTIONS:

REFER TO SAMPLE SUBMISSION INSTRUCTIONS ON SAMPLE SUBMISSION PAGE

COLLABORATORS:

These materials were developed through a collaborative process between Swine Medicine Education Center, Center for Food Security and Public Health, American Association of Swine Veterinarians, National Pork Board, Multistate Partnership for Security in Agriculture and United States Department of Agriculture.

FUNDING:

This resource was developed with funding by the National Pork Board.

ILLUSTRATIONS:

Mary Breuer
Swine Medicine Education Center
Iowa State University