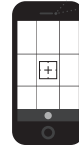


# ORAL FLUIDS

1. OPEN CAMERA APP
2. FOCUS ON QR CODE
3. TAP BANNER TO WATCH VIDEO



## CONSIDERATIONS:

- CONSULT YOUR VETERINARIAN FOR THE LOCATION AND NUMBER OF ROPES TO USE.
  - NEWLY PLACED PIGS TEND TO BE UNINTERESTED IN HANGING ROPES.
  - IF PENS ARE DIVIDED BY CONCRETE WALLS, AN EXTENSION ROPE COULD BE SECURED TO OVERHEAD BEAMS, THEN ORAL FLUIDS ROPE ATTACHED TO EXTENSION ROPE. BRACKETS ARE ANOTHER OPTION.
  - DO NOT TIE ROPE IN A KNOT ON GATING.
- 
- FOR SAFETY, BE AWARE OF PEN SURROUNDINGS FOR HAZARDS AND CURIOUS ANIMALS WHEN COLLECTING SAMPLES.
  - USE PERSONAL PROTECTIVE EQUIPMENT.
  - USE CLEAN SUPPLIES TO AVOID SAMPLE CONTAMINATION.
  - LABEL SAMPLES WITH PERMANENT MARKER.

## SUPPLIES:

- 3/8" or 1/2" COTTON ROPE  
(3-STRANDED TWISTED, UNDYED, UNBLEACHED)

---

- GALLON PLASTIC BAG

---

- CUTTING TOOL

---

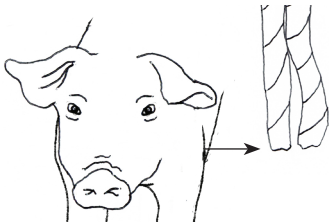
- CONICAL TUBE

---

## COLLECTION INSTRUCTIONS:

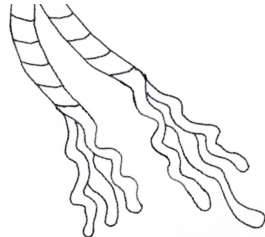
### STEP 1.

CUT ROPE SO THAT WHEN FOLDED IN HALF THE ENDS HANG AT SHOULDER HEIGHT OF PIGS.



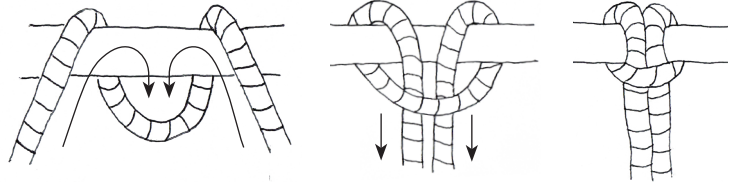
### STEP 2.

UNRAVEL BOTH ENDS OF ROPE.



### STEP 3.

TIE ROPE IN AN AREA OF PEN AWAY FROM FEED AND WATER. FIRST, FOLD ROPE IN HALF, DRAPE FOLDED END OVER GATE, BRING BOTH ENDS THROUGH LOOP, PULL TO SECURE.



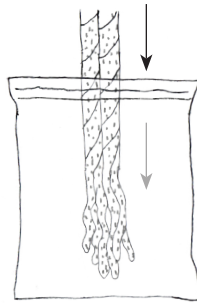
### STEP 4.

ALLOW PIGS TO CHEW ON ROPE FOR 15-30 MINUTES.



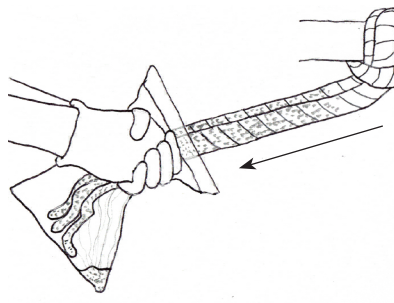
### STEP 5.

WHILE STILL SECURED, PLACE ROPE INTO PLASTIC BAG.



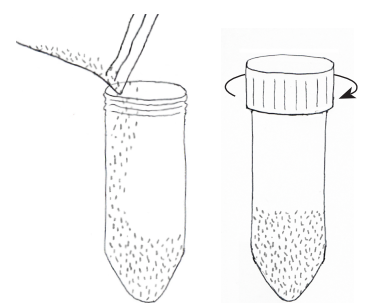
### STEP 6.

STRIP, SQUEEZE, OR WRING THE ROPE SO FLUIDS ACCUMULATE INTO THE BAG.



### STEP 7.

POUR AT LEAST 5 mL OF ORAL FLUIDS INTO TUBE, SECURE CAP, REMOVE AND DISCARD ROPE. PROMPTLY CHILL SAMPLES FOR SHIPMENT.



## SUBMISSION INSTRUCTIONS:

REFER TO SAMPLE SUBMISSION INSTRUCTIONS ON SAMPLE SUBMISSION PAGE

### COLLABORATORS:

These materials were developed through a collaborative process between Swine Medicine Education Center, Center for Food Security and Public Health, American Association of Swine Veterinarians, National Pork Board, Multistate Partnership for Security in Agriculture and United States Department of Agriculture.

### FUNDING:

This project is funded by USDA's Animal and Plant Health Inspection Service through the National Animal Disease Preparedness and Response Program

### ILLUSTRATIONS:

Mary Breuer  
Swine Medicine Education Center  
Iowa State University