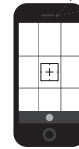


LYMPH NODES

1. OPEN CAMERA APP
2. FOCUS ON QR CODE
3. TAP BANNER TO WATCH VIDEO



CONSIDERATIONS:

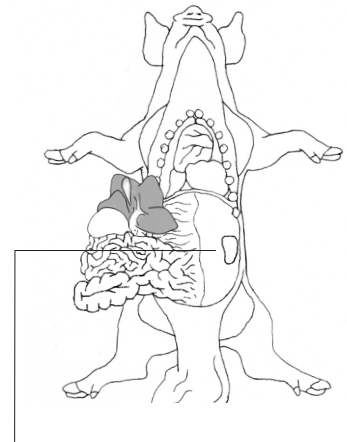
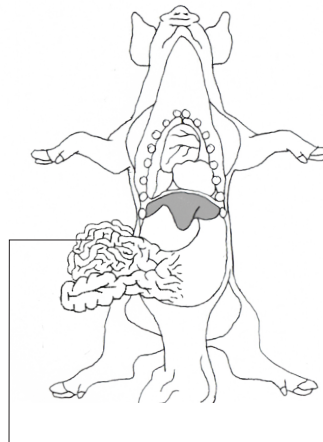
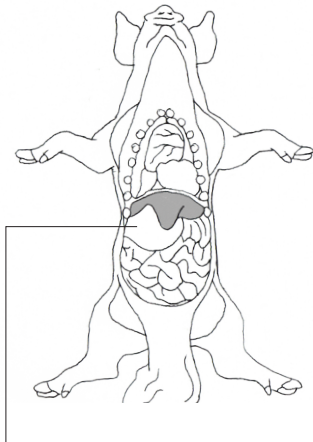
- EUTHANIZE PIGS ACCORDING TO FARM PROTOCOL.
- CONSULT WITH YOUR VETERINARIAN TO DETERMINE WHICH LYMPH NODES TO COLLECT.
- AVOID CONTAMINATION OF LYMPH NODES WITH GASTROINTESTINAL CONTENTS.
- USE PERSONAL PROTECTIVE EQUIPMENT.
- USE CLEAN SUPPLIES TO AVOID SAMPLE CONTAMINATION.
- LABEL SAMPLES WITH PERMANENT MARKER.

SUPPLIES:

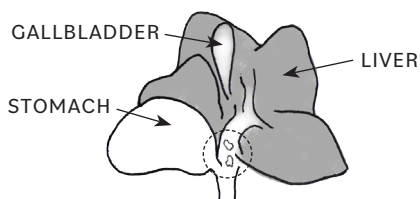
- KNIFE
- SEALABLE PLASTIC BAG OR CONTAINER

COLLECTION INSTRUCTIONS:

(REFER TO NECROPSY HANDOUT FOR OPENING THE PIG)

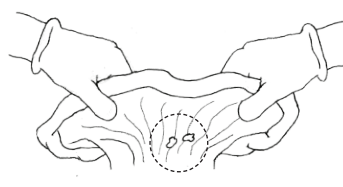


GASTROHEPATIC LYMPH NODES



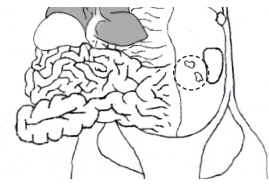
SMALL PEA-TO GRAPE-SIZE STRUCTURES, IN THE TISSUE BETWEEN THE STOMACH AND LIVER.

MESENTERIC LYMPH NODES



A CHAIN OF SMALL PEA-TO GRAPE-SIZE STRUCTURES, IN THE TISSUE CONNECTING THE LOOPS OF SMALL INTESTINE.

RENAL LYMPH NODES



SMALL PEA-TO GRAPE-SIZE STRUCTURES, IN THE TISSUE THAT CONNECTS THE KIDNEY TO THE BODY.

STEP 1.

LOCATE DESIRED LYMPH NODES.

STEP 2.

CUT AROUND AND GENTLY REMOVE THE LYMPH NODES.

STEP 3.

PLACE SAMPLES IN CONTAINER AND PROMPTLY CHILL FOR SHIPMENT.

SUBMISSION INSTRUCTIONS:

REFER TO SAMPLE SUBMISSION INSTRUCTIONS ON SAMPLE SUBMISSION PAGE

COLLABORATORS:

These materials were developed through a collaborative process between Swine Medicine Education Center, Center for Food Security and Public Health, American Association of Swine Veterinarians, National Pork Board, Multistate Partnership for Security in Agriculture and United States Department of Agriculture.

FUNDING:

This project is funded by USDA's Animal and Plant Health Inspection Service through the National Animal Disease Preparedness and Response Program

ILLUSTRATIONS:

Mary Breuer
Swine Medicine Education Center
Iowa State University