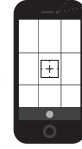


BLEEDING

EAR SWAB

1. OPEN CAMERA APP
2. FOCUS ON QR CODE
3. TAP BANNER TO WATCH VIDEO



CONSIDERATIONS:

- THIS TECHNIQUE IS TYPICALLY USED FOR BOARS OR ADULT SWINE.
- NEVER STRAIGHTEN A BENT NEEDLE, REPLACE WITH NEW.

- FOR SAFETY, BE AWARE OF PEN SURROUNDINGS FOR HAZARDS AND CURIOUS ANIMALS WHEN COLLECTING SAMPLES.
- USE PERSONAL PROTECTIVE EQUIPMENT.
- UTILIZE CLEAN SUPPLIES TO AVOID SAMPLE CONTAMINATION.
- LABEL SAMPLES WITH PERMANENT MARKER.

SUPPLIES:

- RUBBER BAND OR ELASTIC BAND
- RAYON POLYESTER SWAB
- 20 GAUGE NEEDLE
- SNAP CAP TUBE (WITH 1 ML STERILE SALINE)
- PAPER TOWELS OR WIPES

ANIMAL RESTRAINT:

(PERSON 1)

REFER TO FINISHER OR ADULT RESTRAINT INSTRUCTIONS ON RESTRAINT PAGE

COLLECTION INSTRUCTIONS:

(PERSON 2)

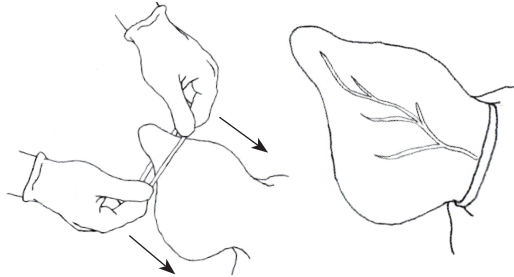
STEP 1.

CLEAN OFF EAR WITH PAPER TOWELS OR WIPES, IF DIRTY.



STEP 2.

PLACE BAND SECURELY AROUND BASE OF EAR. VEINS SHOULD QUICKLY BECOME APPARENT.



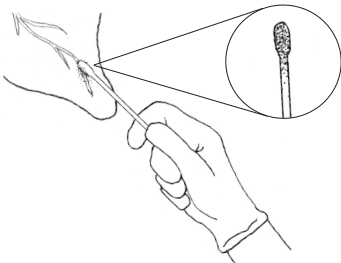
STEP 3.

START TOWARDS THE EDGE OF THE EAR. USE CLEAN NEEDLE TO PRICK VEIN. BLOOD SHOULD BEGIN TO POOL.



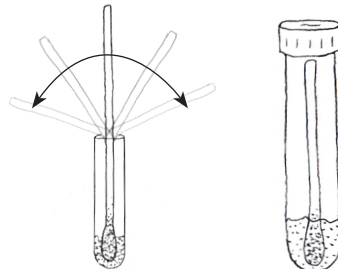
STEP 4.

USE SWAB TO COLLECT BLOOD UNTIL SWAB IS SATURATED. REMOVE THE BAND FROM THE EAR.



STEP 5.

BREAK OFF TIP OF SWAB INTO SNAP CAP TUBE WITH STERILE SALINE. SECURE LID.



STEP 6.

CHECK ANIMALS IN PEN TO CONFIRM NORMAL ACTIVITY WHEN BLEEDING IS COMPLETE. PROMPTLY CHILL SAMPLES FOR SHIPMENT.



SUBMISSION INSTRUCTIONS:

REFER TO SAMPLE SUBMISSION INSTRUCTIONS ON SAMPLE SUBMISSION PAGE

COLLABORATORS:

These materials were developed through a collaborative process between Swine Medicine Education Center, Center for Food Security and Public Health, American Association of Swine Veterinarians, National Pork Board, Multistate Partnership for Security in Agriculture and United States Department of Agriculture.

FUNDING:

This project is funded by USDA's Animal and Plant Health Inspection Service through the National Animal Disease Preparedness and Response Program

ILLUSTRATIONS:

Mary Breuer
Swine Medicine Education Center
Iowa State University